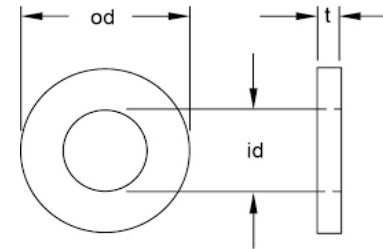


BS 3410 Table 4 Light Gauge Washers



BS 3410 Table 4 Light Gauge Washers								
Diameter	1/8	3/16	1/4	5/16	3/8			
o/d	0.37	0.5	0.62	0.75	0.87			
t	0.03	0.03	0.04	0.05	0.05			

Diameter	7/16	1/2	5/8	3/4	1			
o/d	1.00	1.12	1.37	1.62	2.12			
t	0.06	0.06	0.07	0.07	0.09			

Material	Finish
<i>Steel</i>	<i>Zinc (CR3)</i>

INFORMATION AND DRAWINGS PROVIDED ARE FOR REFERENCE ONLY